

Statfjord FLX - The Journey to a Light Weight Pulling Unit

Matthew King
Project manager
Equinor FLX
19th October 2023



Agenda

- What is a light weight pulling unit?
- Why?
 - And is it really worth it?
- Our journey
 - Scope of work
 - Timeline & plan going forward
- Challenges, risks & opportunities
- Questions

What is a light weight pulling unit?

	Drilling Derrick	Pulling Unit
Max Lifting Capacity	> 400 ton	150 ton
Lifting Height	36 meter	14 meter
lifting mechanism	Drawworks	Hydraulic Cylinder
Weight	> 1000 tons	140 - 170 tons
Pump Capacity	> 4500 lpm	800 - 1000 lpm
Max tubular size	30" Conductor	7 5/8"
Topdrive Installed	Yes	No
Pulling Speed	> 100 m/min	15 m/min
Total power	> 4000 kW	300 - 500 kW
Movable between platforms	No	Yes
Personnel (per shift)	12 - 14	4 - 5
Fully automated pipe handling?	Yes	Yes
Drillpipe racking?	Yes	No
Working winches	3	1

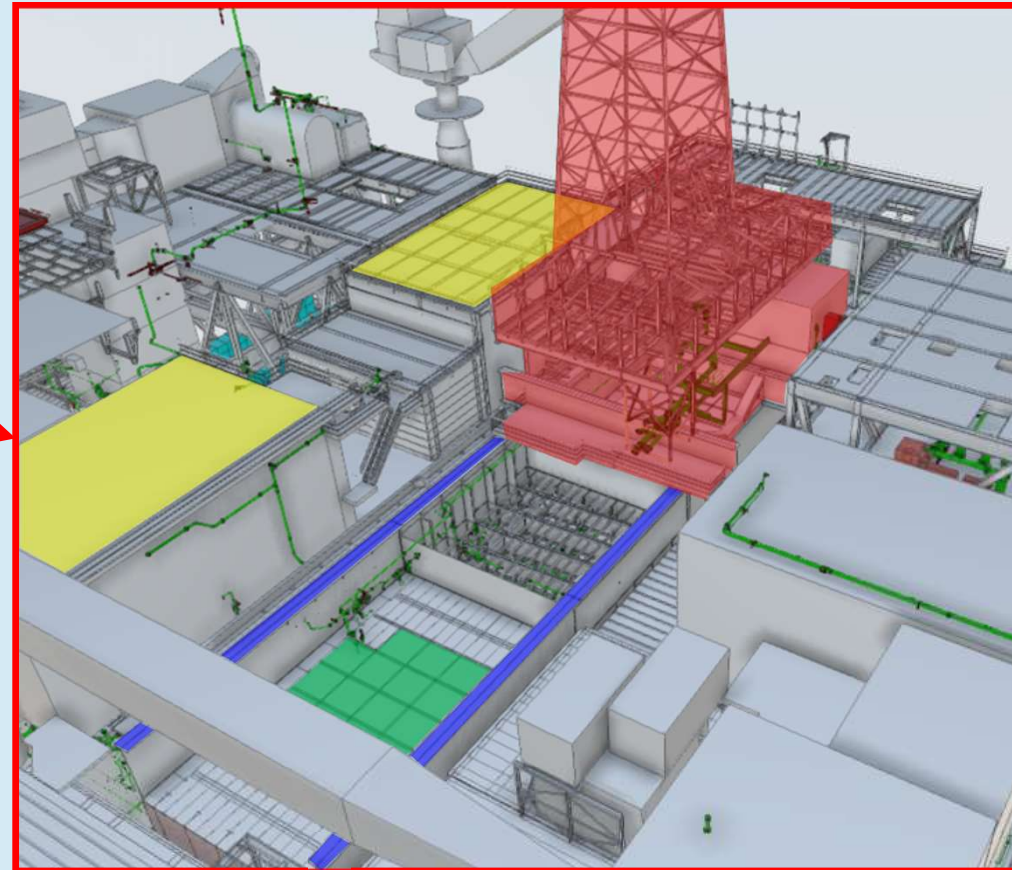
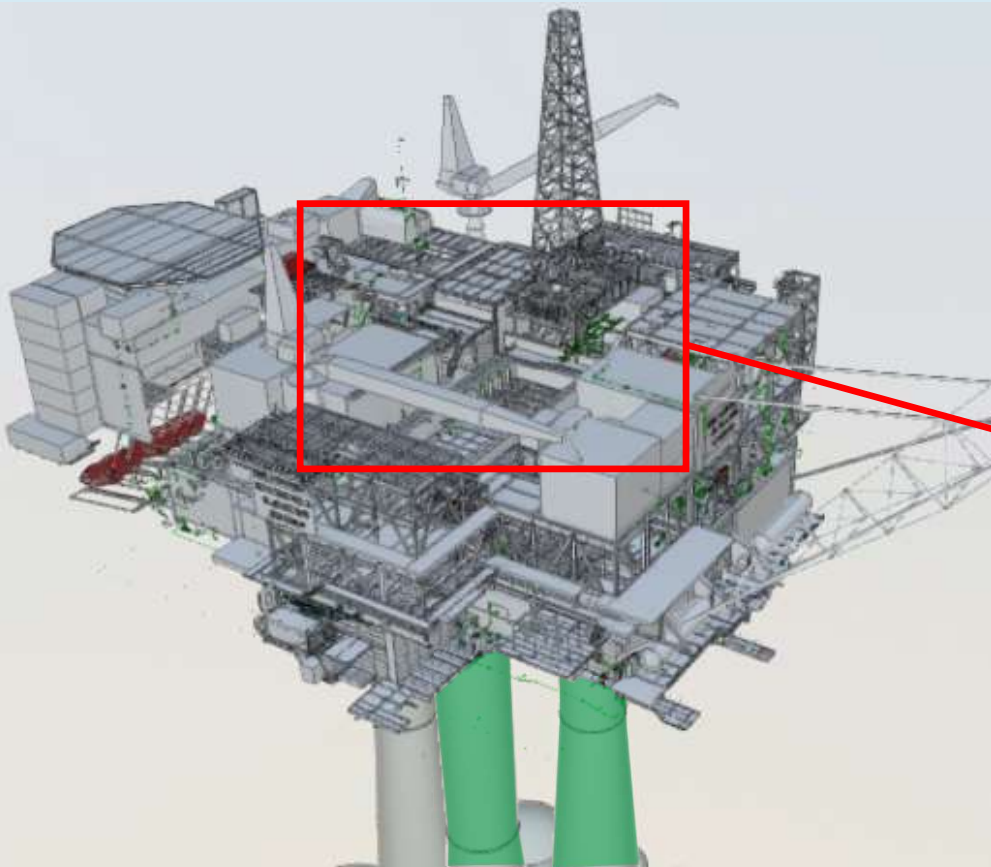
Drilling Derrick



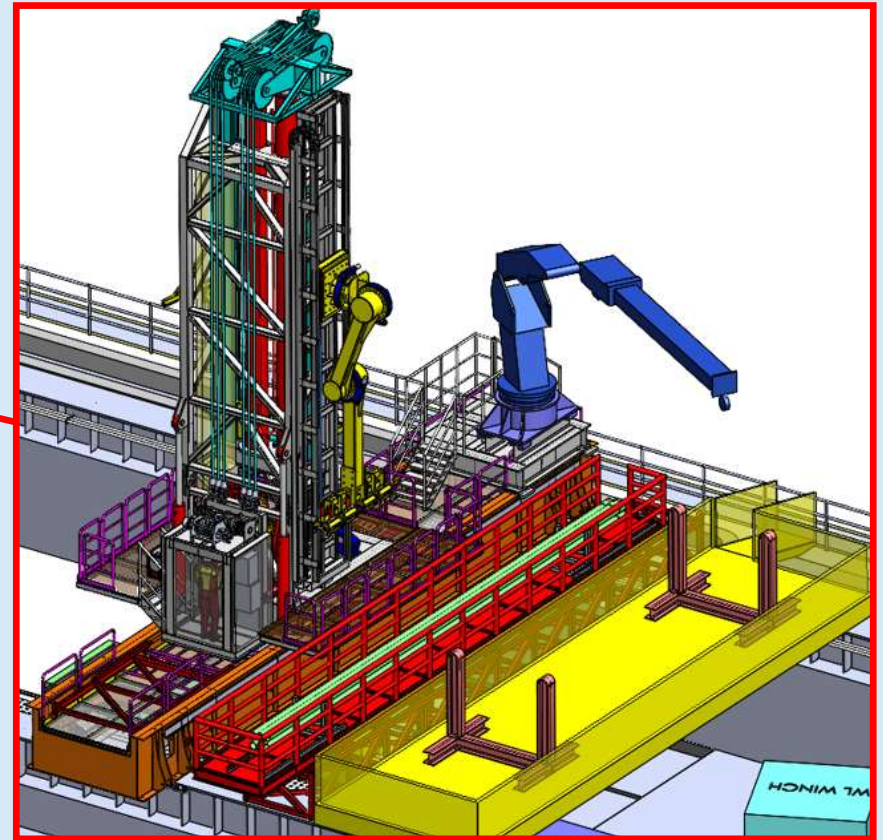
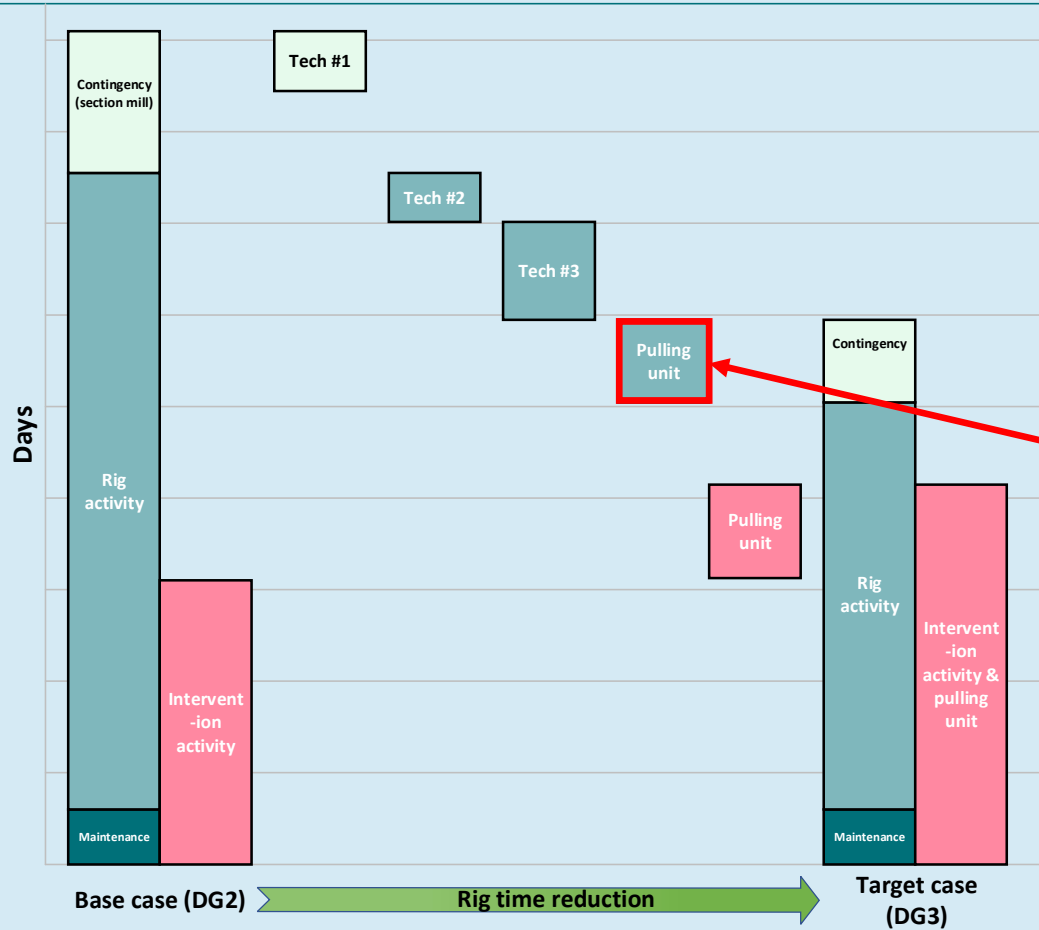
Pulling Unit



Equinor FLX | Light house for the future on the NCS Statfjord A Platform

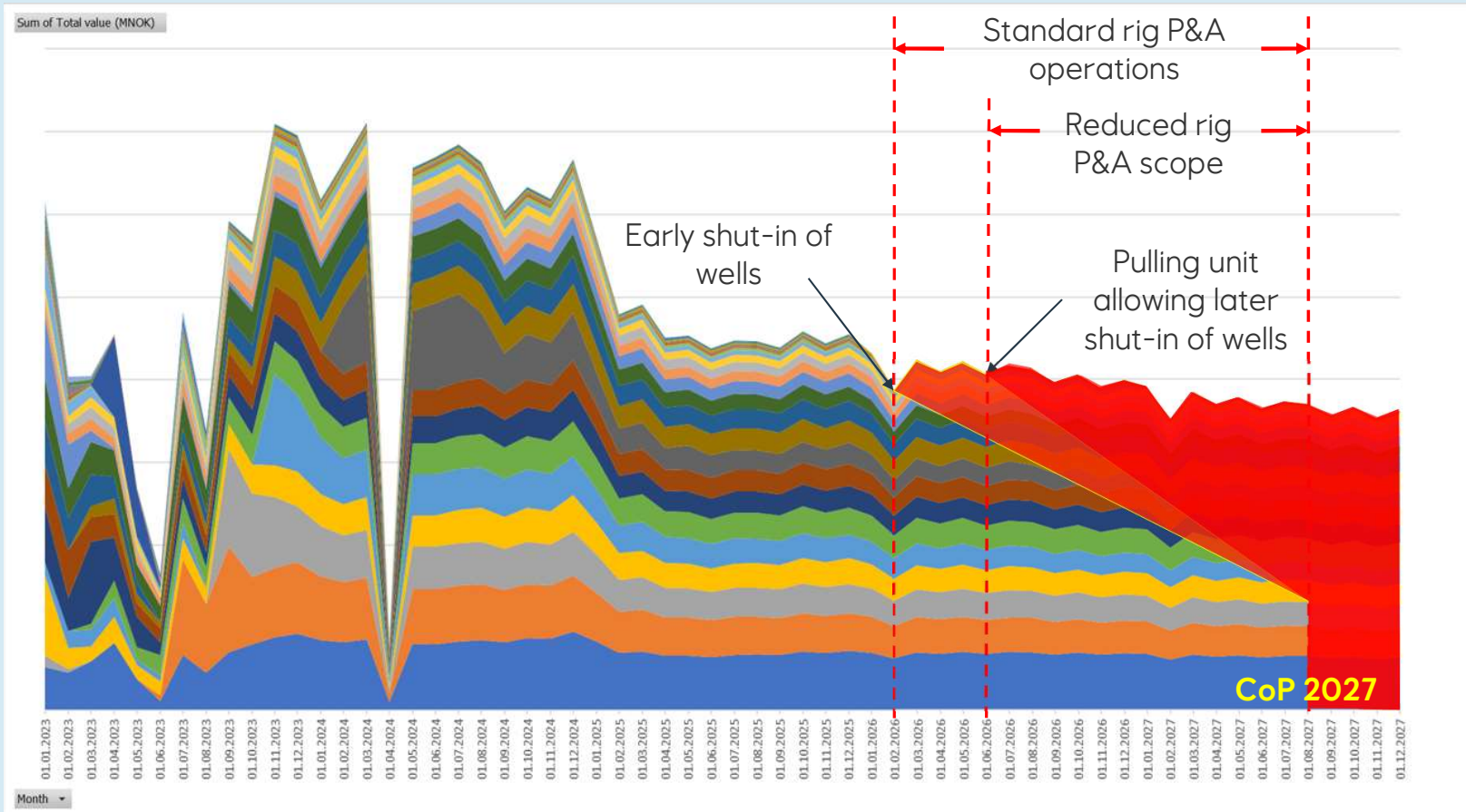


Why?



Pulling unit

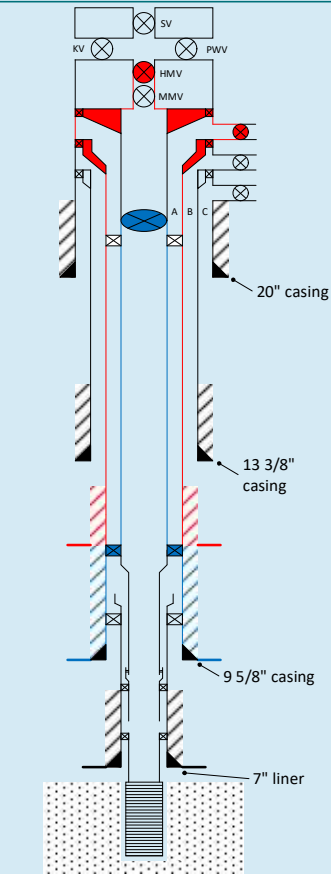
Is it worth it?



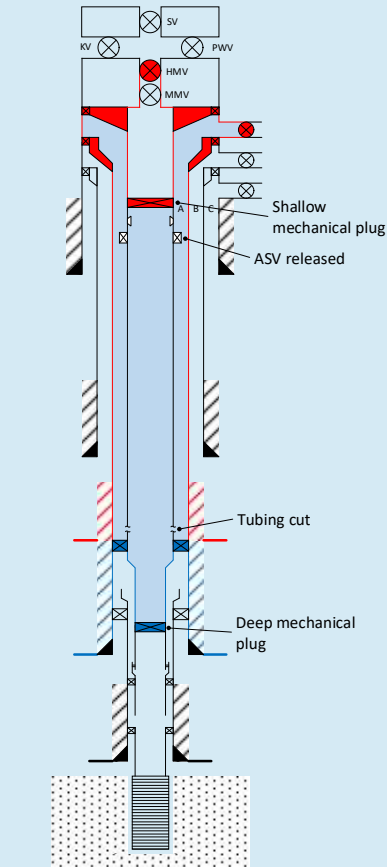
Cost



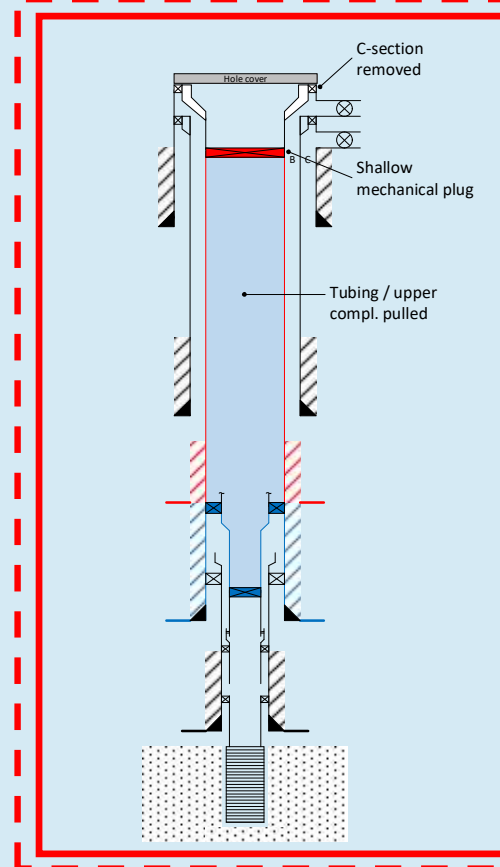
P&A scope of work



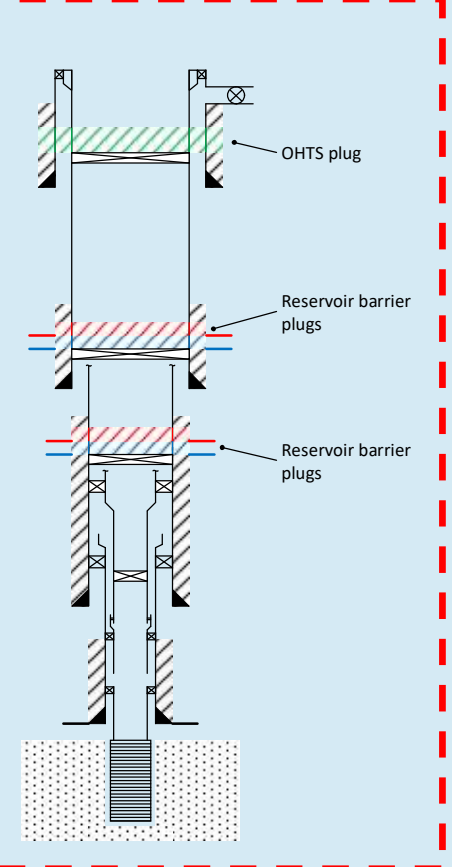
Well in production



Wireline pre-P&A

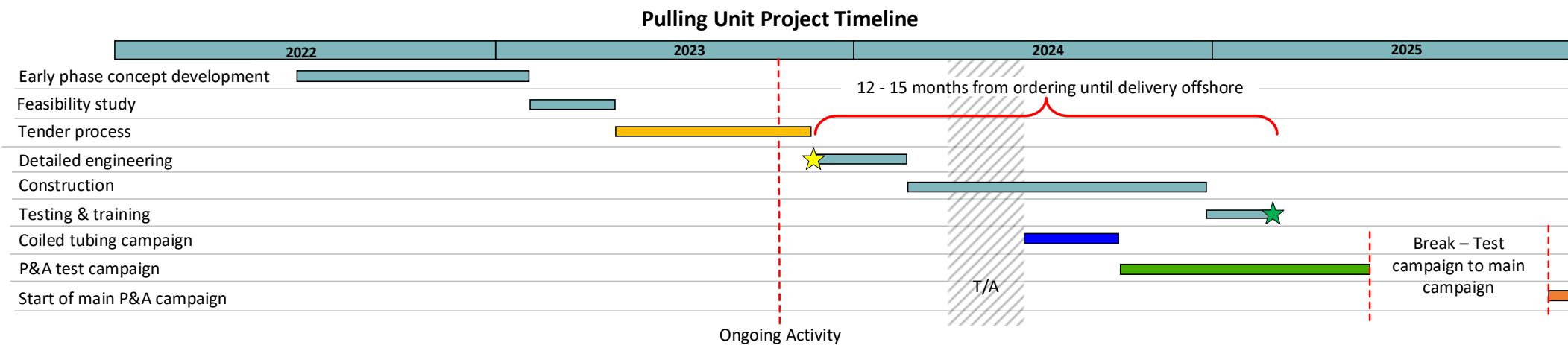


Pulling unit



Rig Scope

Pulling Unit Project Timeline



Challenges & potential upsides



- What do we actually need?
- Technical challenges
- Stakeholder management
- Requirements
- HSE
- Time

RISKS?

- Rig less workovers
- Work on multiple platforms
- Coiled tubing
- Upgrades
- Full rig less P&A

Questions

