

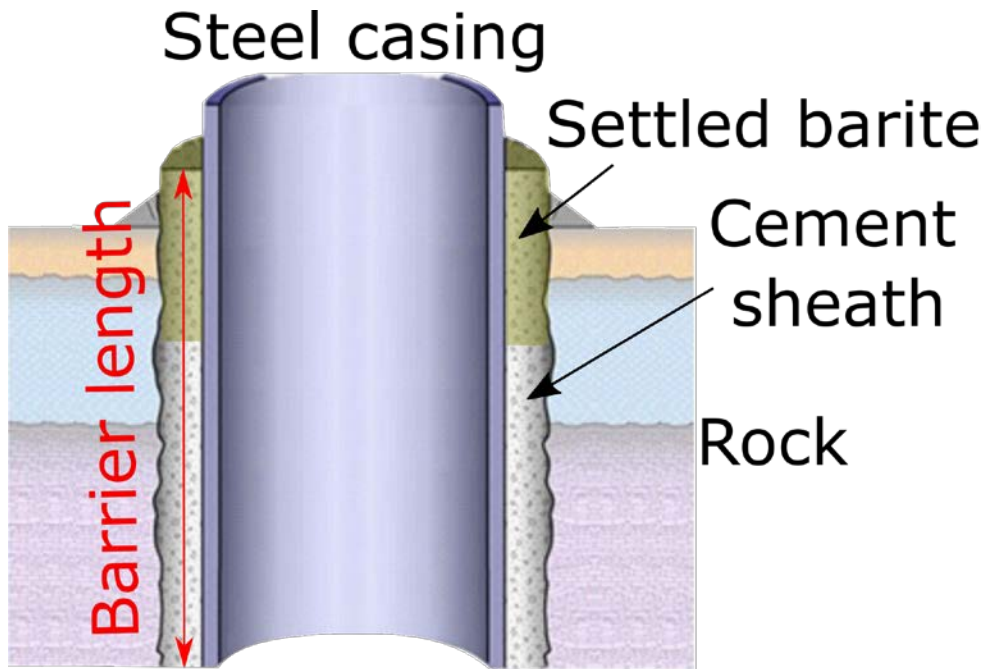
# *Settled Barite as Annular Barrier – Characterization and refinement*

*Plug and Abandonment Seminar 2022-10-20*

Dr. Ragnhild Skorpa, [ragnhild.skorpa@sintef.no](mailto:ragnhild.skorpa@sintef.no)  
Dr. Mahmoud Khalifeh, [mahmoud.khalifeh@uis.no](mailto:mahmoud.khalifeh@uis.no)

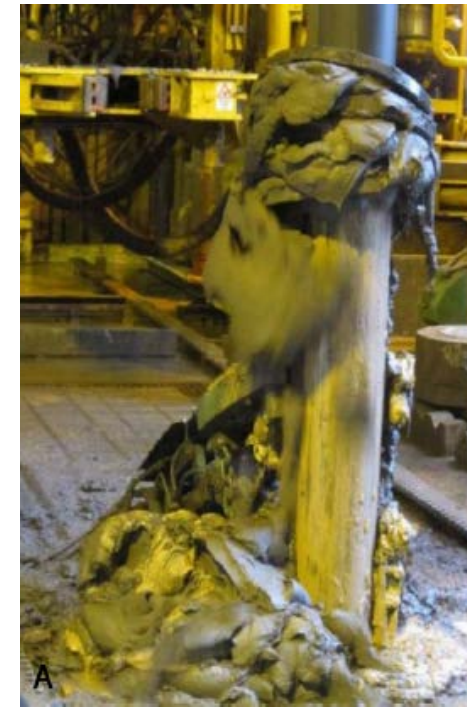
# Settled barite in Plugging & Abandonment

Leave in ?? as additional barrier



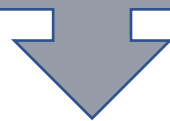
After Vrålstad et al. 2018

Casing removal



# SFI SWIPA – Subsurface Well Integrity and P&A

Scientific understanding of well barrier material



Improved well barrier design methodologies



Reduced  
Cost

(New)  
Materials

Operations

Barrier  
lengths

## R&D partners:



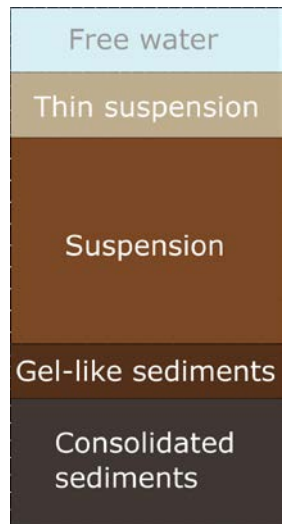
## Financial industry partners:



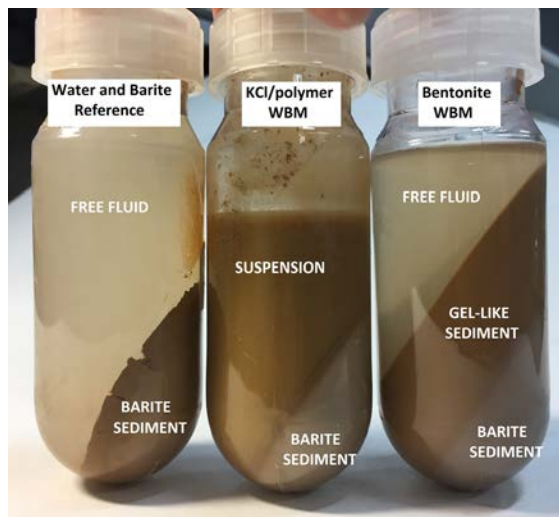
## In-kind industry partners:



# Compacted barite sediments



**Academic perspective**  
compacted sediments

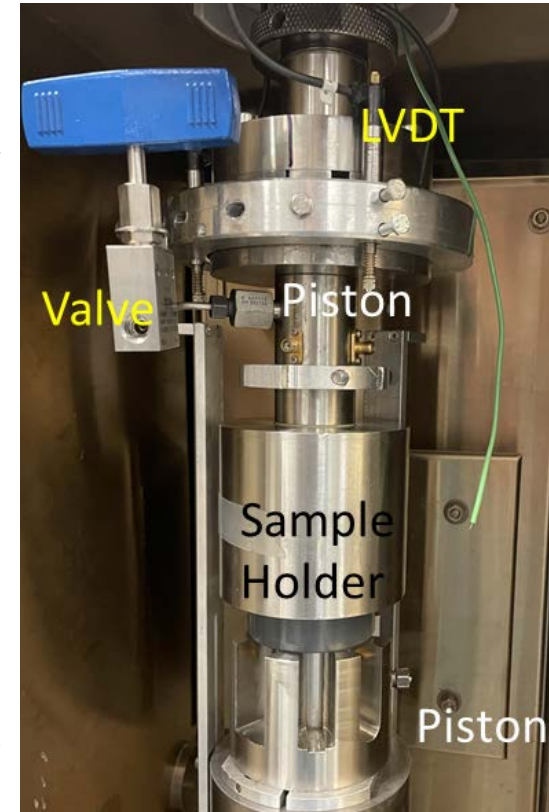
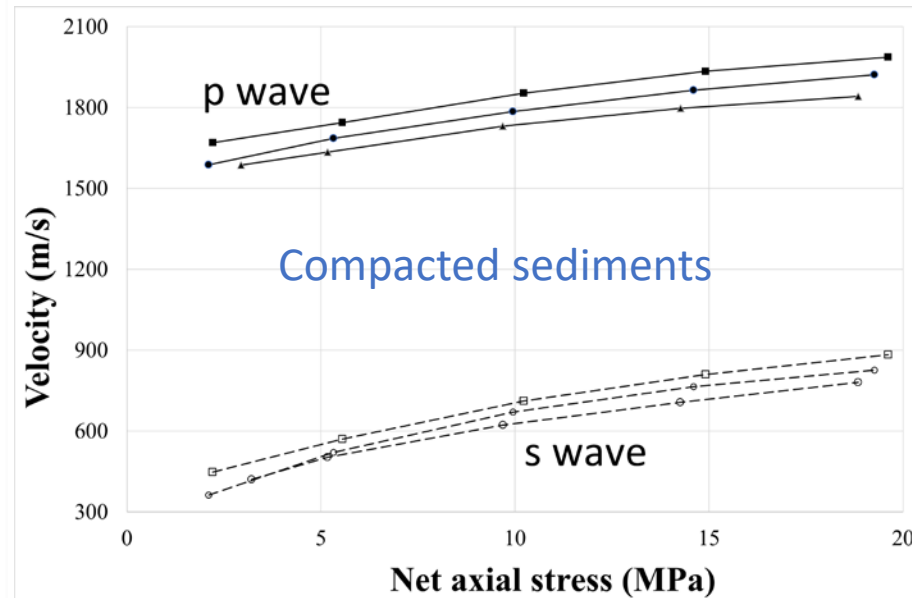
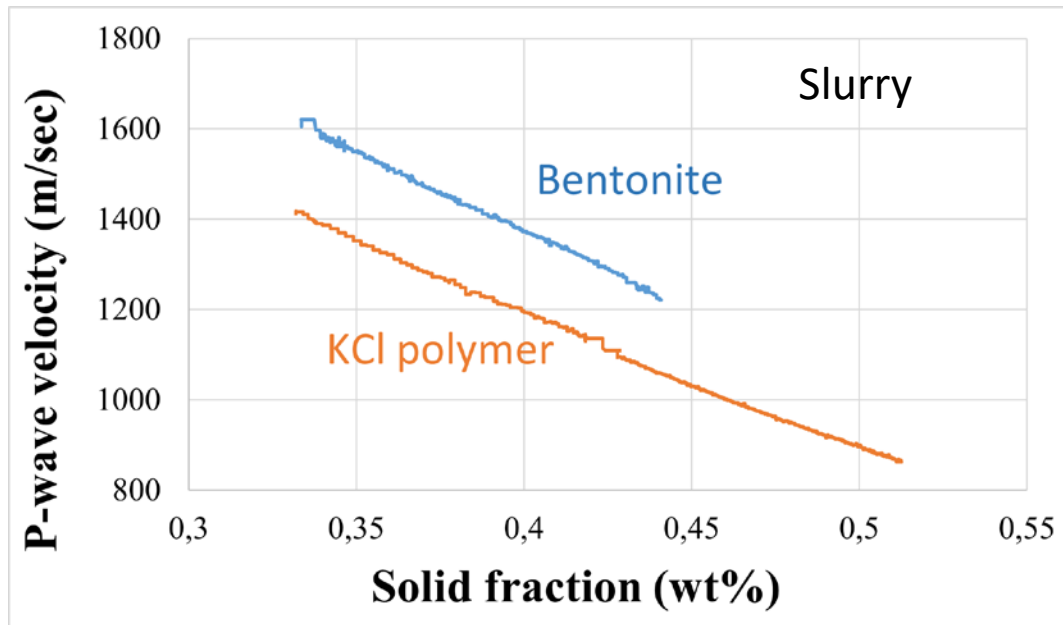


**Field**  
Settled Drilling Fluids  
solids



OMAE2018-78695  
Werner et al. NRS 2021  
OMAE2022-81074

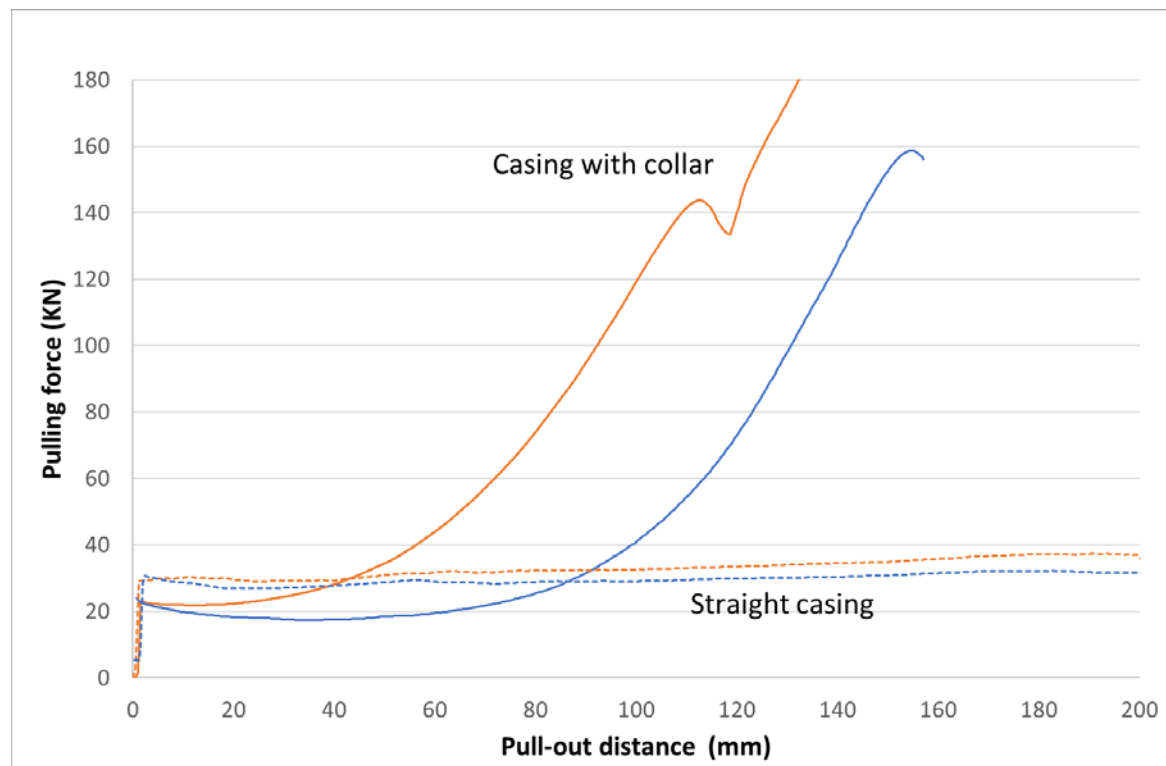
# Characterization of sediments during compaction



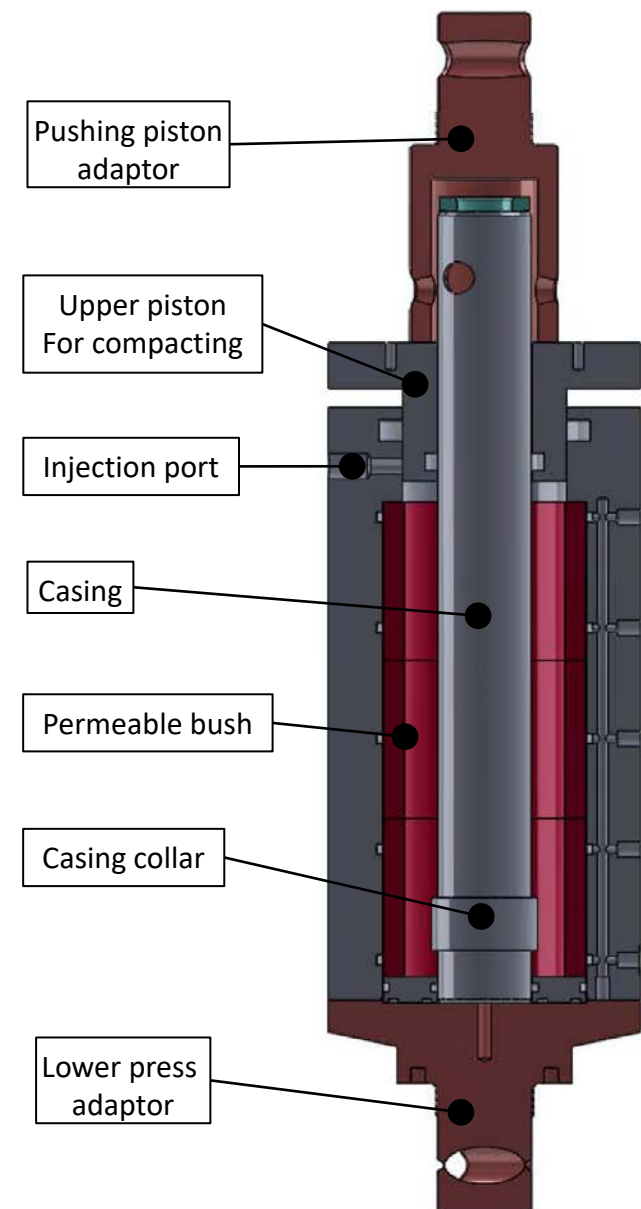
OMAE2021-65117



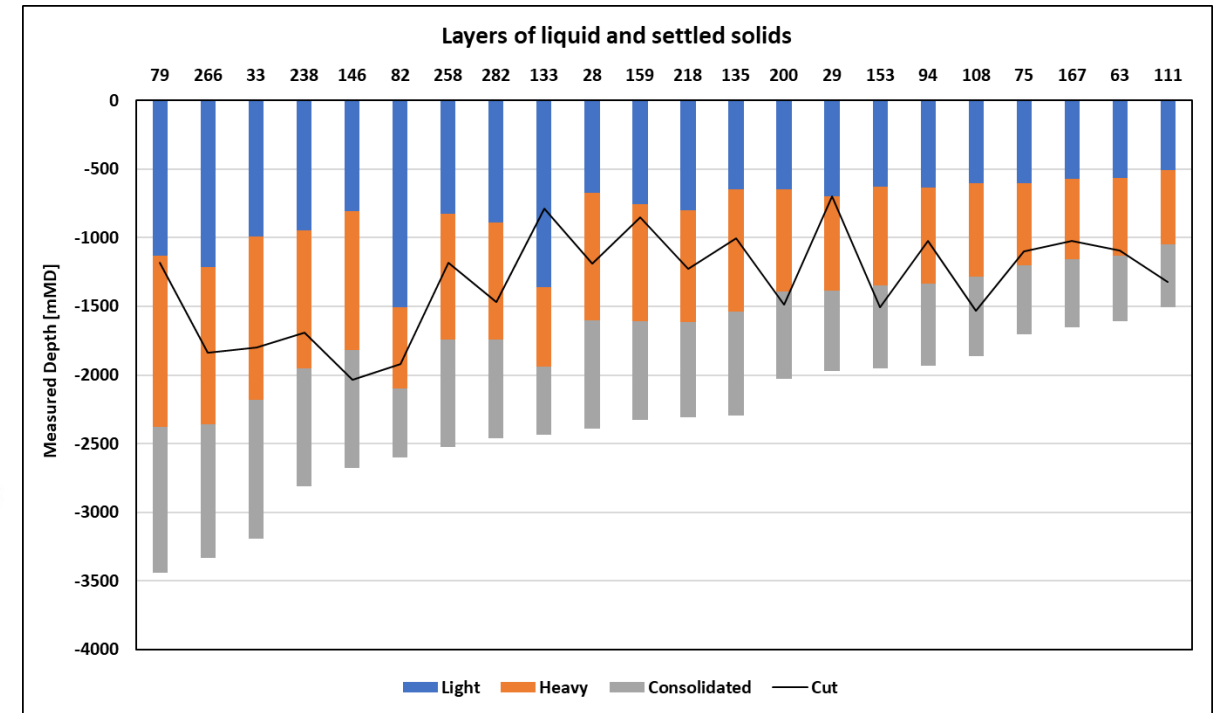
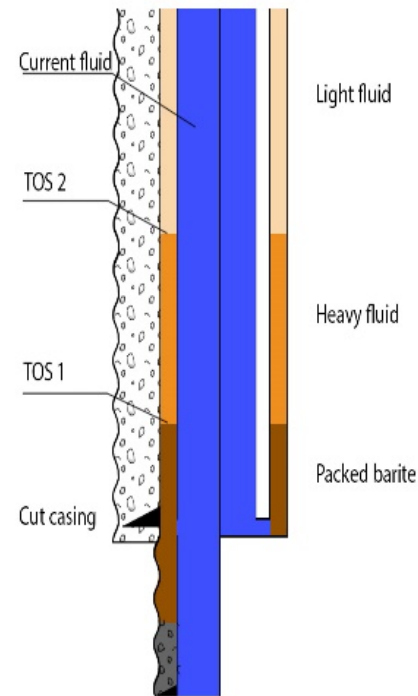
# Pipe-pulling experiments



OMAE2019-96547

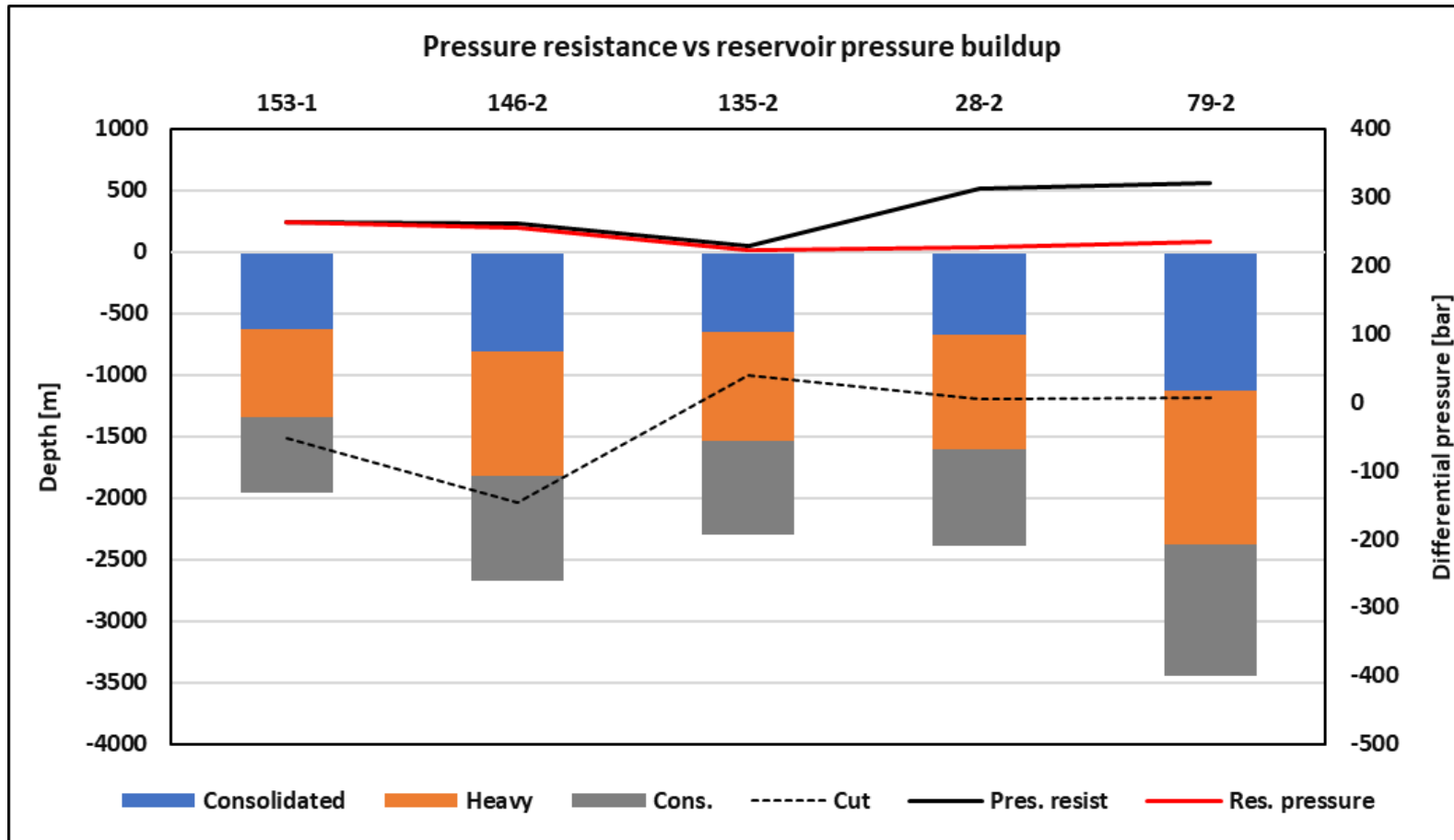


# Settled Barite Adheres to Casing



[SPE-209536-MS](#)

# It Resists Pressure



[MSc thesis Eskild Muri Bø](#)



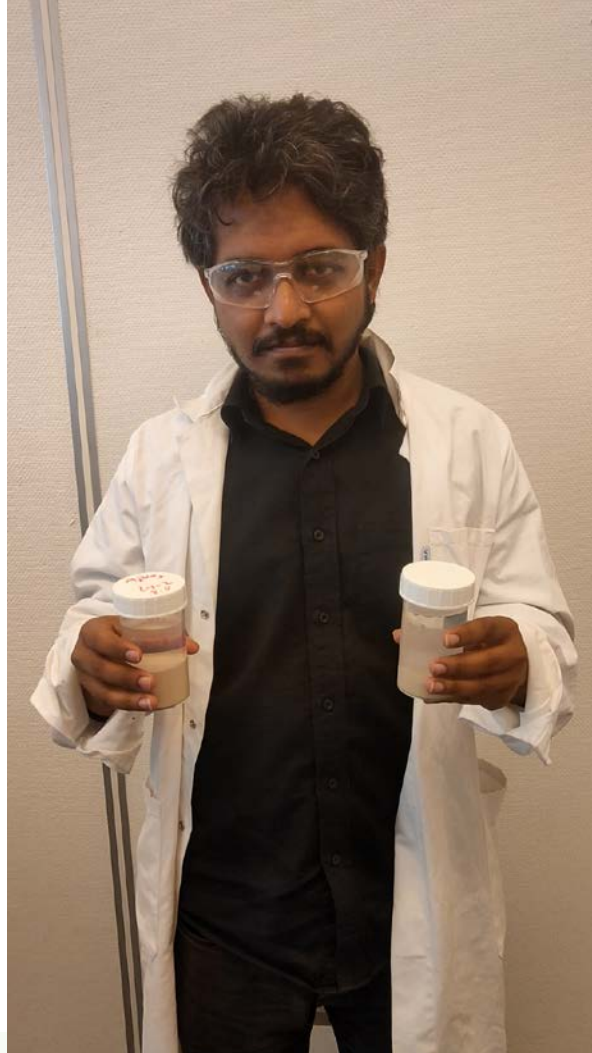
# How to Mitigate Cut & Pull?

*Either disperse barite*

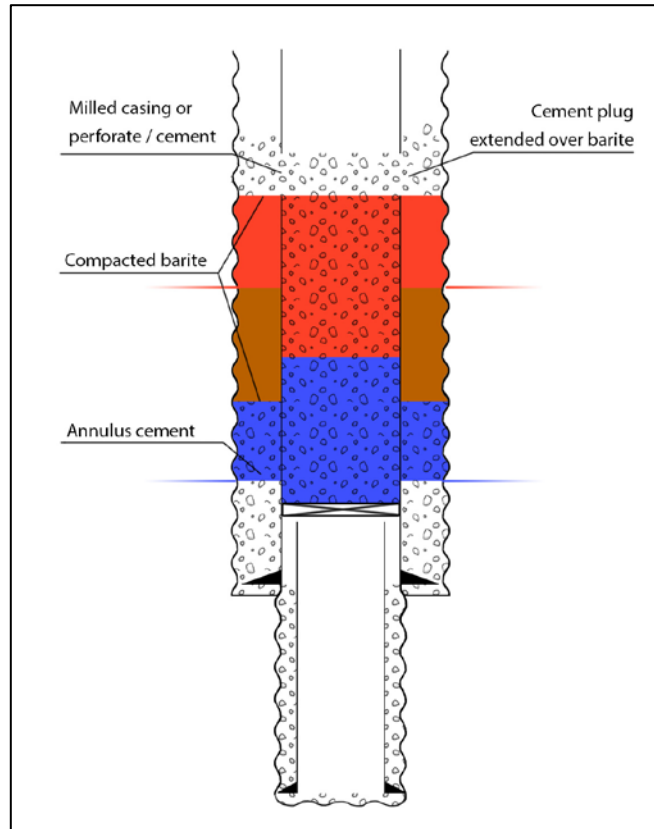
*Or*

*Qualify it as permanent annular barrier*

# Understand the Surface Chemistry!



# How to Mitigate Cut & Pull?



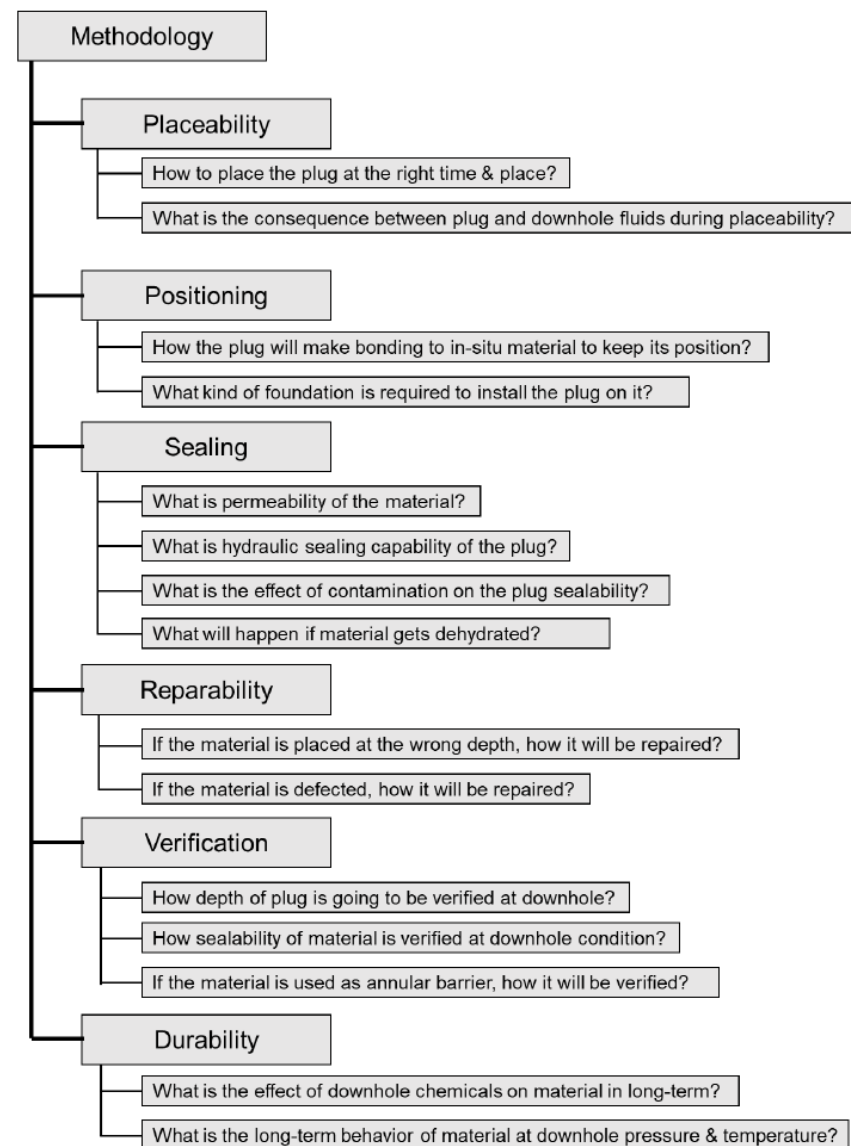
*Either disperse barite*

*Or*

*Qualify it as permanent annular barrier*

# How to Qualify

**Oil&Gas UK Guideline**  
**NORSOK D010**  
**DNV.GL Risk-Based**



# How to Qualify!



a) Sample 1 in Filter-loss cell



b) Top of the sample 1 barite plug



c) Top of the sample 2 barite plug



d) Bottom of the sample 2 barite plug



e) Sample 2 in Filter-loss cell using disc



f) Sample 2 disc after fluid loss test

# How to Contact US?

To follow up the progress in *swipa*



PhD student Hazzaz Bin Yousuf

[hazzaz.b.yousuf@uis.no](mailto:hazzaz.b.yousuf@uis.no)

<https://www.uis.no/nb/profile/hazzaz-bin-yousuf>



Dr. Ragnhild Skorpa, WP 1  
manger SWIPA

[Ragnhild.skorpa@sintef.no](mailto:Ragnhild.skorpa@sintef.no)



# Special thanks goes to



Eskild Muri Bø  
Mohammadali Shahmoradi  
Arnela Kljucanin  
Aida Bayati

# *swipa* / *Subsurface Well Integrity Plugging and Abandonment*

[www.swipa.no](http://www.swipa.no)